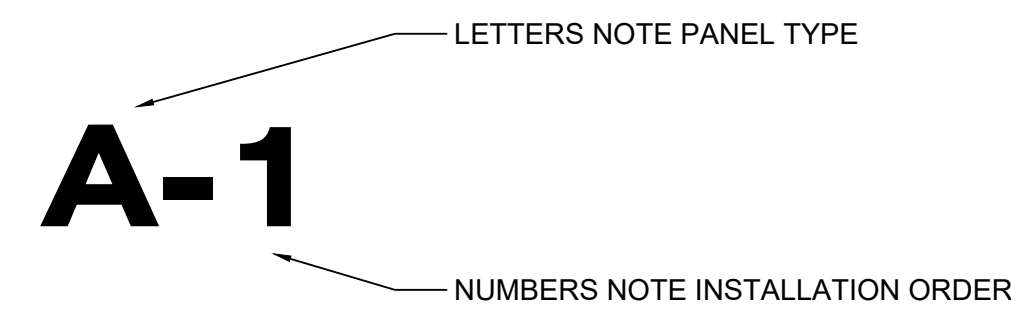


# ESTOLGA 1000 ACM PANEL INSTALLATION INSTRUCTIONS

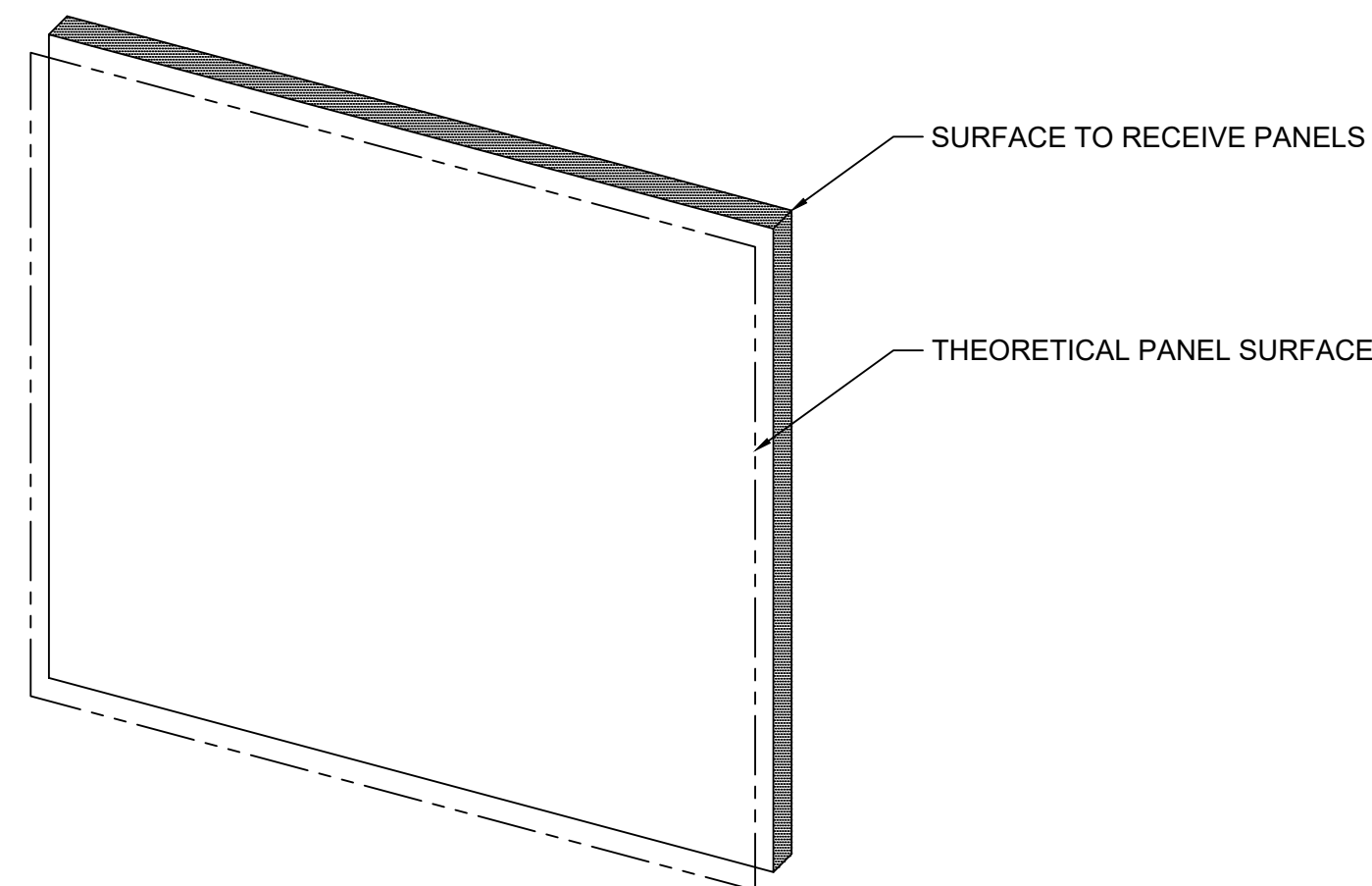
## GENERAL NOTES

THESE INSTRUCTIONS ARE GENERAL IN SCOPE AND FORM. PANELS / COLUMNS ARE TO BE HANDLED AND STORED IN ACCORDANCE WITH SHEET T-1 AND H-1 OF THIS DRAWING SET THROUGHOUT THE INSTALLATION PROCESS. FAILURE TO COMPLY WITH THE INSTRUCTIONS LISTED ON THE INSTALLATION INSTRUCTIONS AND HANDLING MANUAL MAY RESULT IN STRUCTURAL AND VISUAL DISTORTIONS IN THE PANEL / COLUMN SURFACE AND COMPROMISE THE STRUCTURAL INTEGRITY OF THE PANEL / COLUMN SYSTEM. ALLIED METAL IS NOT RESPONSIBLE FOR ANY VISUAL, STRUCTURE AND WATER / AIR INFILTRATION PROBLEMS THAT OCCUR DUE TO IMPROPER HANDLING, STORAGE, AND INSTALLATION OF THE PANEL / COLUMN SYSTEM.

## PANEL LABELS



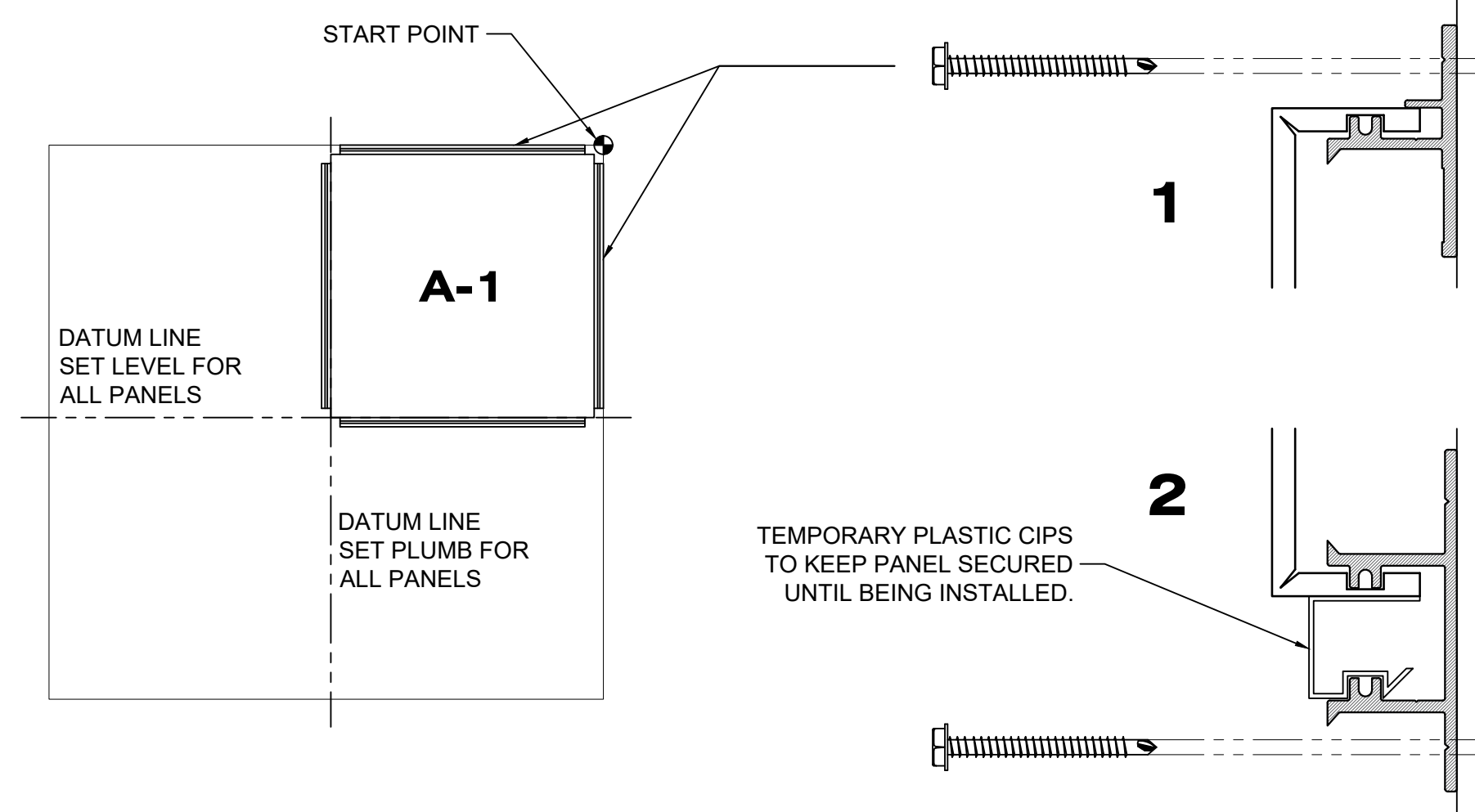
## INSTALLATION INSTRUCTIONS STEP 1: SUBSTRATE INSPECTION



## STEP 2: FIRST PANEL ALIGNMENT AND INSTALLATION

FIRST SET PANEL LEVEL, PLUMB, AND ALLOW FOR PROPER INSTALLATION OF ALL PRECEEDING PANELS.

1. SCREW ATTACHMENT.
2. AFTER PANEL IS SET AND SECURED SCREW ATTACHMENT.



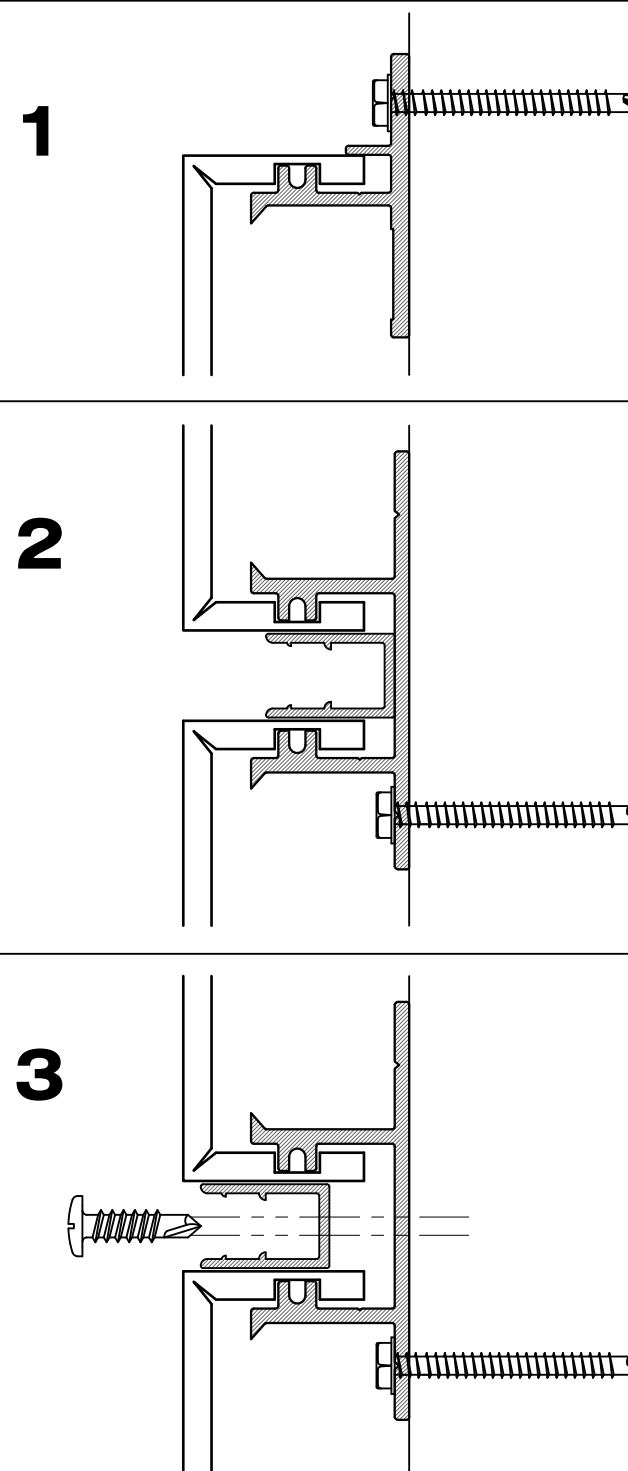
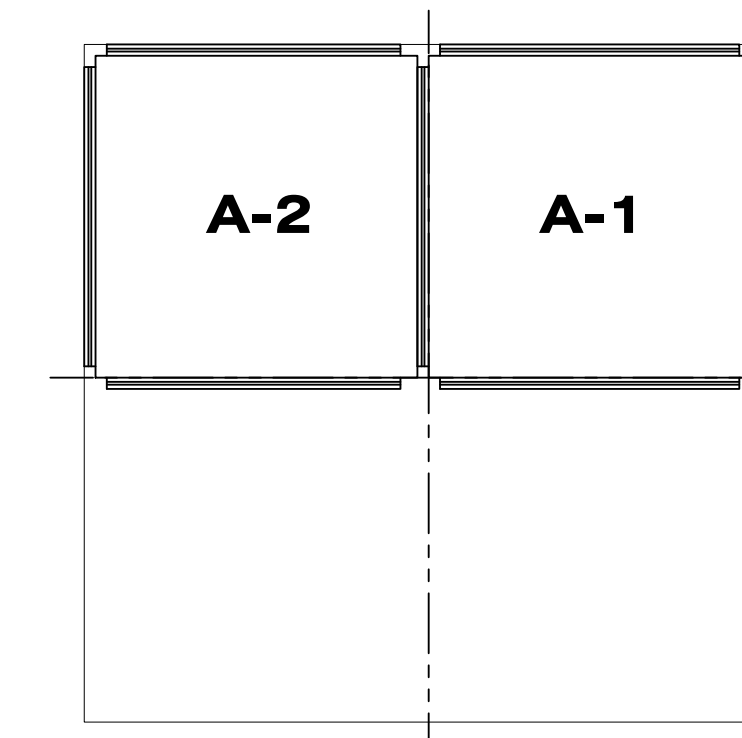
**NOTE:**  
START POINT VARIES WITH PROJECT.

## STEP 3: SECOND PANEL ALIGNMENT AND INSTALLATION

SET SECOND PANEL LEVEL, PLUMB, AND ALLOW FOR PROPER INSTALLATION OF ALL PRECEEDING PANELS.

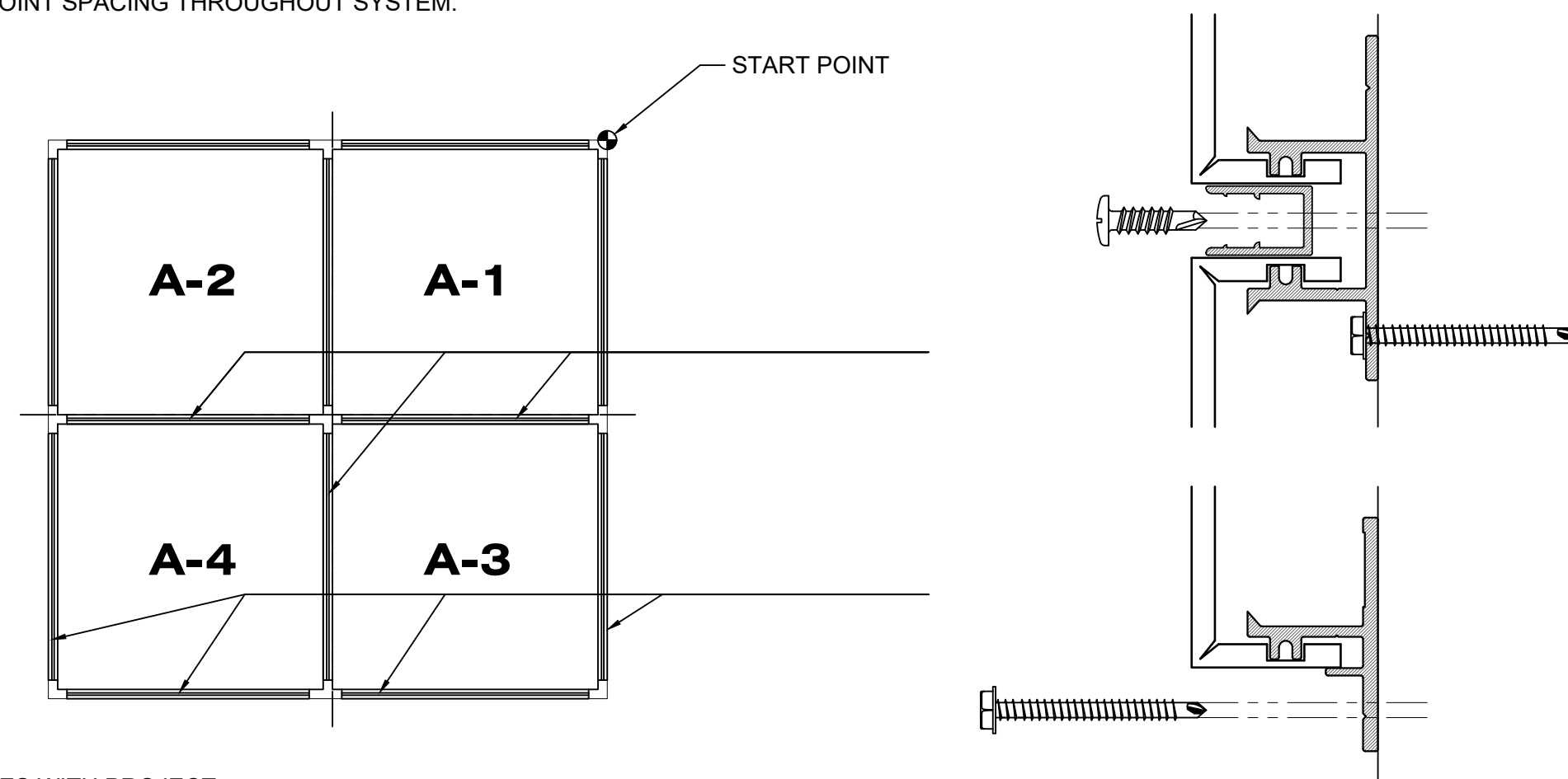
SET JOINT BETWEEN PANELS TO AS PER SHOP DRAWINGS.

1. REMOVE TEMPORARY PLASTIC CLIP.
2. INSTALL THE FOLLOWING PANEL.
3. INSERT U CHANNEL AND SCREW.
4. IF IT IS THE LAST PANEL FOLLOW PROCESS #1 IN STEP 2. OTHERWISE, FOLLOW PROCESS #2 IN STEP 2.



## STEP 3: FOLLOWING PANEL INSTALLATION

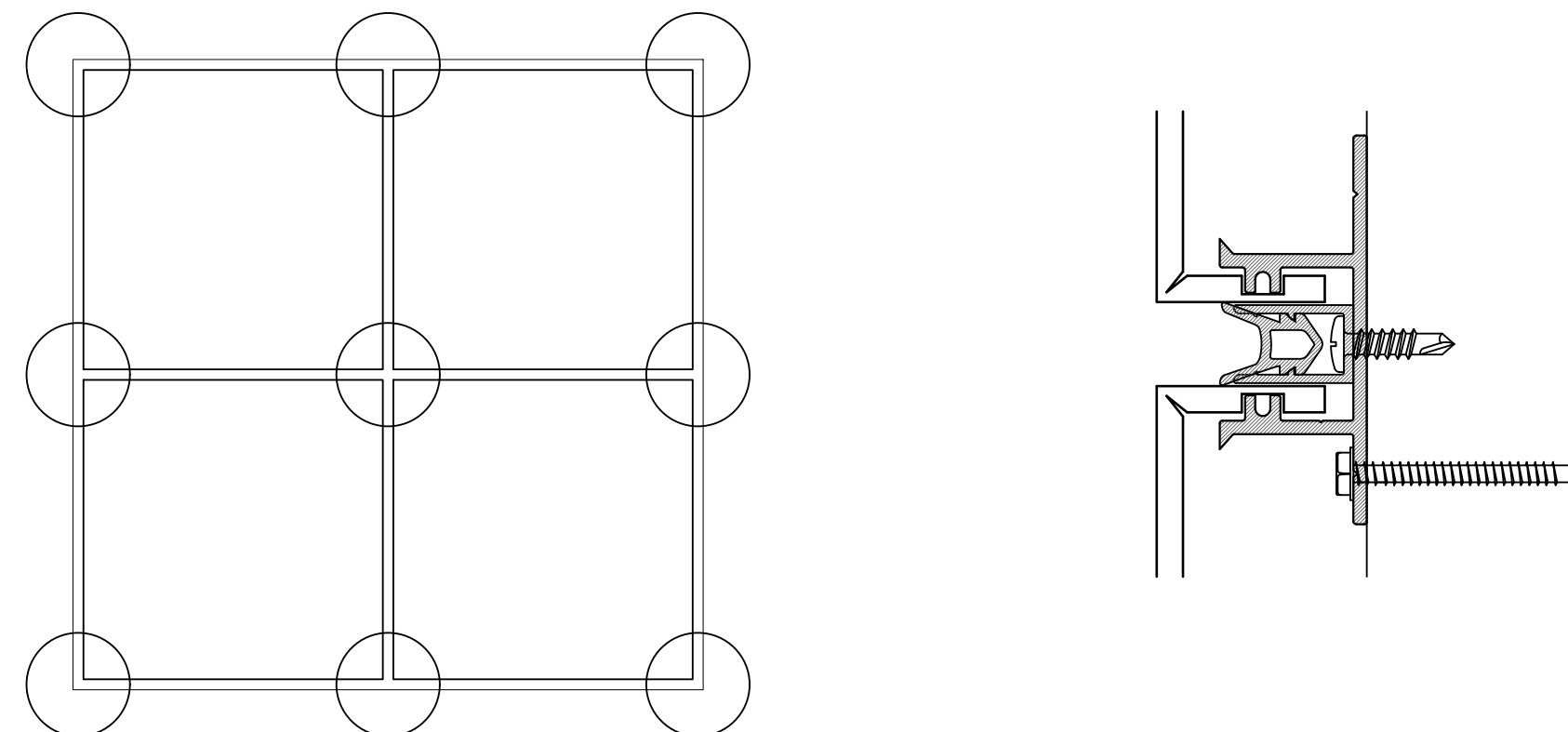
REPEAT INSTALLATION FOR FOLLOWING PANELS.  
MAINTAIN EQUAL JOINT SPACING THROUGHOUT SYSTEM.



**NOTE:**  
START POINT VARIES WITH PROJECT.

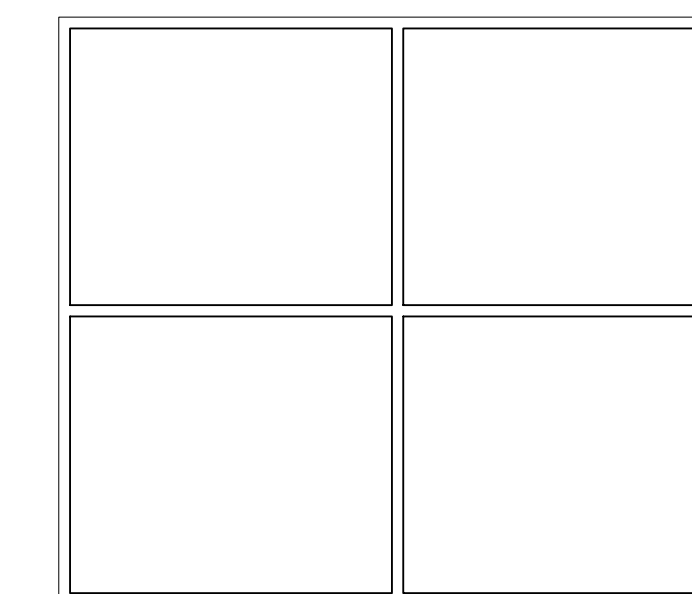
## STEP 4: GASKET OR BACKER ROD AND SEALANT INSTALLATION

INSTALL GASKET OR BACKER ROD AND SEALANT IN ALL JOINTS AS PER MANUFACTURER'S REQUIREMENTS. WHEN INSTALLING GASKET PLACE A BEAD OF SEALANT OR ADHESIVE IN JOINTS. BEAD TO BE A MINIMUM OF 0'-6" LONG AND PLACED AT ALL JOINTS INTERSECTIONS (IN ALL DIRECTIONS). ALL ENDS OF THE GASKET AND ALL CORNERS (SEE CIRCLES ON DRAWING).



## STEP 5: CLEANING.

CLEAN ALL PANELS PER PANEL MANUFACTURER'S REQUIREMENTS.



ALLIED SPECIALITY GROUP, INC.  
3225 DELL AVENUE  
NORTH BERGEN, NJ 07047  
TEL: (201)223-4600  
E: info@alliedmetal.com

PROJECT	DRAWN BY
<b>INSTALLATION INSTRUCTIONS</b>	<b>GCD</b>
ARCHITECT	JOB #
	DATE
	<b>01-30-2023</b>

REV #	DATE	INITIALS
△		
△		
△		
△		
△		

REV #	DATE	INITIALS
△		
△		
△		
△		
△		

This document is the sole property of ALLIED METAL. All design, manufacturing, copying and reuse are expressly prohibited. It is intended only for confidential use. If you are not the intended recipient, you should not disseminate, distribute or copy this document. If you have received this document by mistake, please notify the sender immediately by e-mail. This document is controlled by ALLIED METAL. Any unauthorized use or disclosure of this document is strictly prohibited. This document is controlled by ALLIED METAL. Any unauthorized use or disclosure of this document is strictly prohibited.

Approved By: \_\_\_\_\_  
Date Approved: \_\_\_\_\_

SHEET NUMBER  
**AM I.1**