

PANELS OVER 24" SUPPORTED
WITH U-SHAPE STIFFENERS
ATTACHED WITH CAULKING
(BY ALLIED)

STANDARD SYSTEM DEPTH

ESTOLGA 3000 DRY SEAL
ATTACHMENT SYSTEM
(BY ALLIED)

ESTOLGA U - CHANNEL
(BY ALLIED)

SNAP - IN SILICONE GASKET
(BY ALLIED)

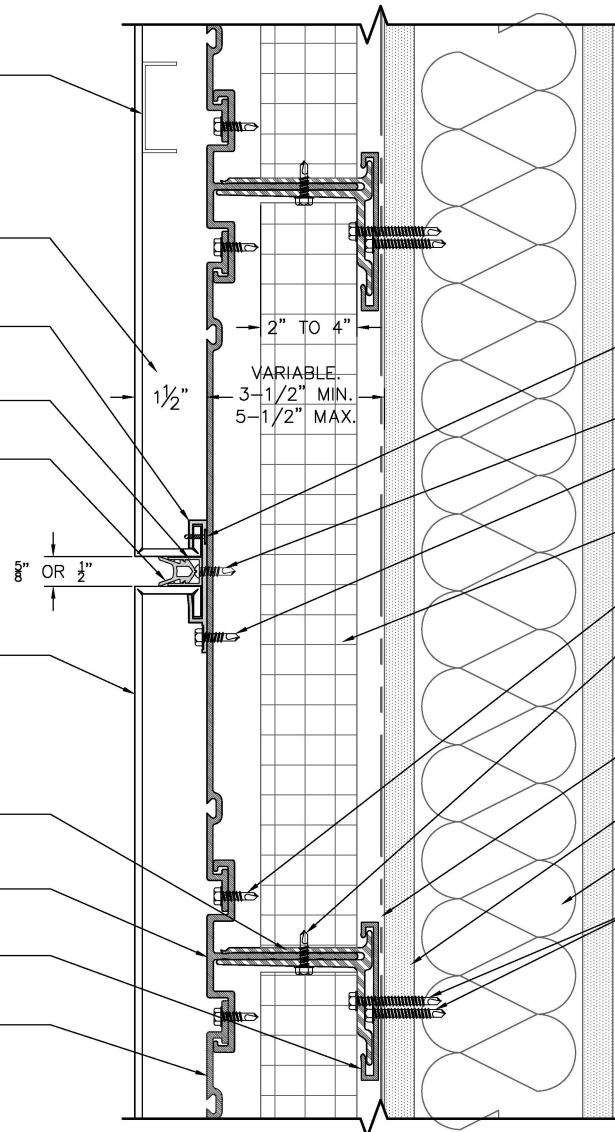
COMPOSITE ALUMINUM PANEL
(BY ALLIED)

CL-300 THERME CLIP
CLT-TC4/6-300

CL-300 WALL MOUNT
T-TRACK CLT-
WMTT-300

CL-300 WALL BASE
TRACK CLT-BT-300

CL-300 WALL MOUNT
SUPPORT CLT-
WMS-3/6-300



CONTRACTOR NOTE:
ALL WALLS ARE TO BE PLUMB
& LEVEL. INSTALLER TO USE
NECESSARY SHIMS IF WALLS
ARE NOT PLUMB OR LEVEL.
SHIMS (NOT BY ESTOLGA)

#8 K-LATH ZINC PLATED SDS
(APPLIED BY ALLIED AT FACILITY)

#10 3/4" PHP SCREW

#10 3/4" HWH TEK 3 SCREW

INSULATION
(BY OTHERS)

#10 3/4" HWH TEK 3 SCREW

#10 3/4" HWH TEK 3 SCREW
(POLYAMIDE CLIP TO T TRACK
CONNECTION SHOULD CONSIST
OF (3) #10 FASTENERS)

MOISTURE BARRIER
(BY OTHERS)

SHEATHING
(BY OTHERS)

METAL STUD WALL
(BY OTHERS)

#10 HWH TEK 3 SCREW
(CHOOSE LENGTH OF SCREW SO
THAT A MINIMUM OF 3 THREADS
HAVE ENGAGED STEEL STUD)

Typical Horizontal Joint Detail

ESTOLGA® 3000 Dry Seal System with CL-300 Cladding Support System

TESTED: ASTM E-283, ASTM E-330, and ASTM E-331



ALLIED®
SPECIALTY GROUP