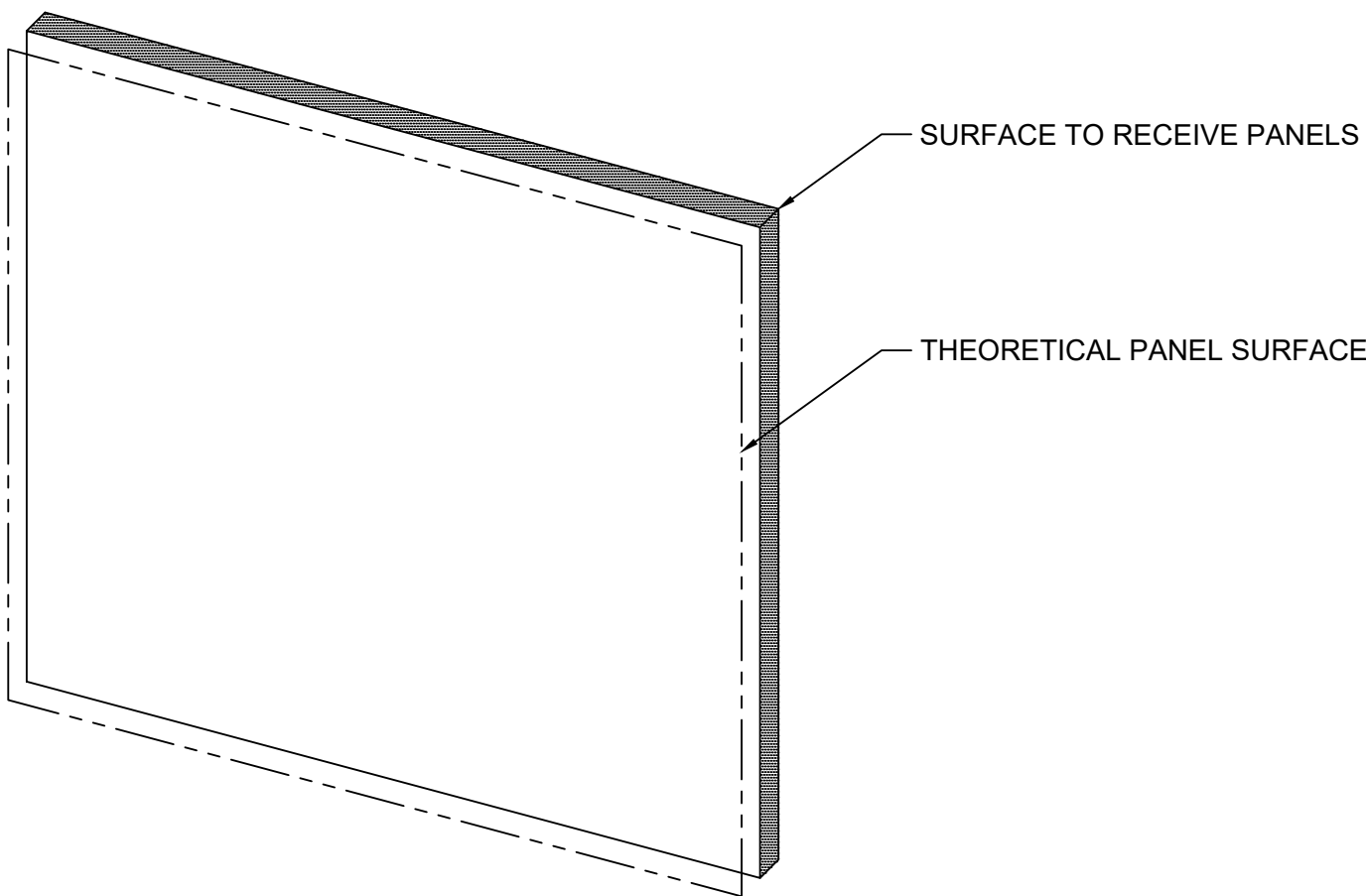


ESTOLGA 3000 ACM PANEL INSTALLATION INSTRUCTIONS

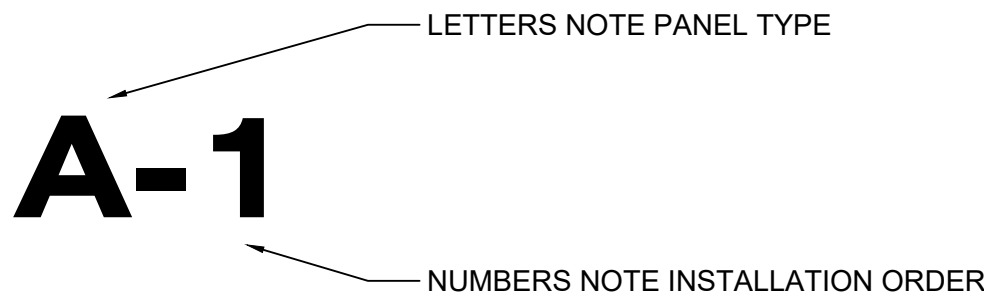
GENERAL NOTES

THESE INSTRUCTIONS ARE GENERAL IN SCOPE AND FORM. PANELS / COLUMNS ARE TO BE HANDLED AND STORED IN ACCORDANCE WITH SHEET T-1 AND H-1 OF THIS DRAWING SET THROUGHOUT THE INSTALLATION PROCESS. FAILURE TO COMPLY WITH THE INSTRUCTIONS LISTED ON THE INSTALLATION INSTRUCTIONS AND HANDLING MANUAL MAY RESULT IN STRUCTURAL AND VISUAL DISTORTIONS IN THE PANEL / COLUMN SURFACE AND COMPROMISE THE STRUCTURAL INTEGRITY OF THE PANEL / COLUMN SYSTEM. ALLIED METAL IS NOT RESPONSIBLE FOR ANY VISUAL, STRUCTURE AND WATER / AIR INFILTRATION PROBLEMS THAT OCCUR DUE TO IMPROPER HANDLING, STORAGE, AND INSTALLATION OF THE PANEL / COLUMN SYSTEM.

INSTALLATION INSTRUCTIONS STEP 1: SUBSTRATE INSPECTION

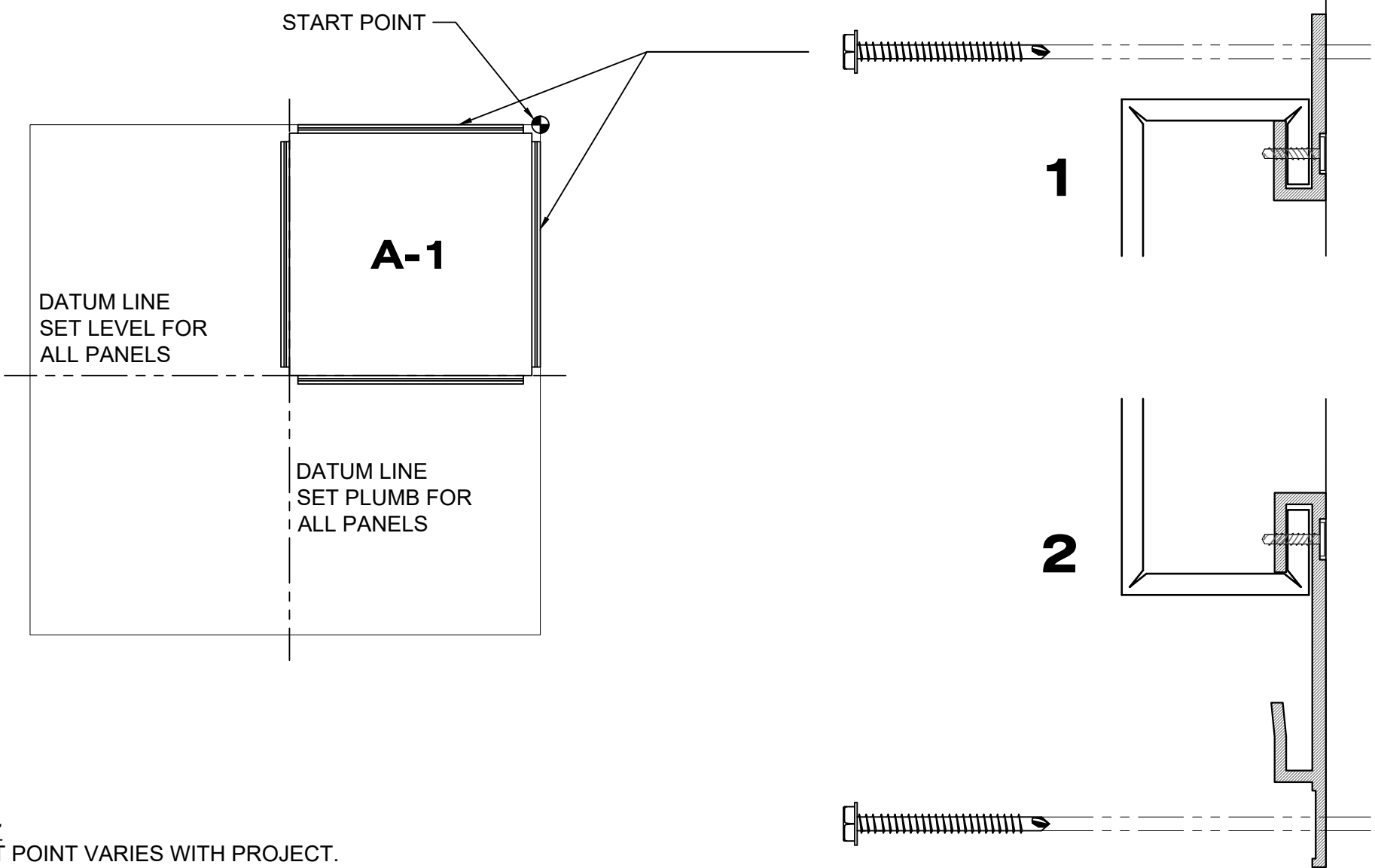


PANEL LABELS



STEP 2: FIRST PANEL ALIGNMENT AND INSTALLATION

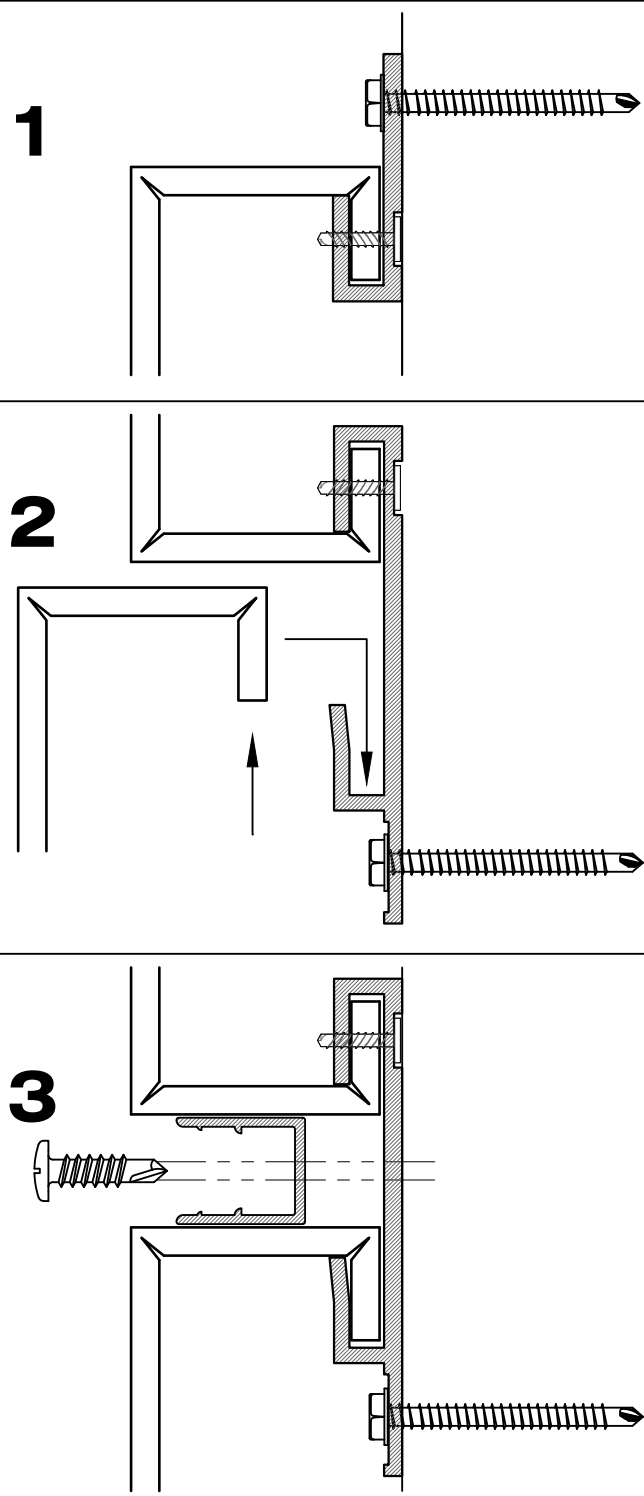
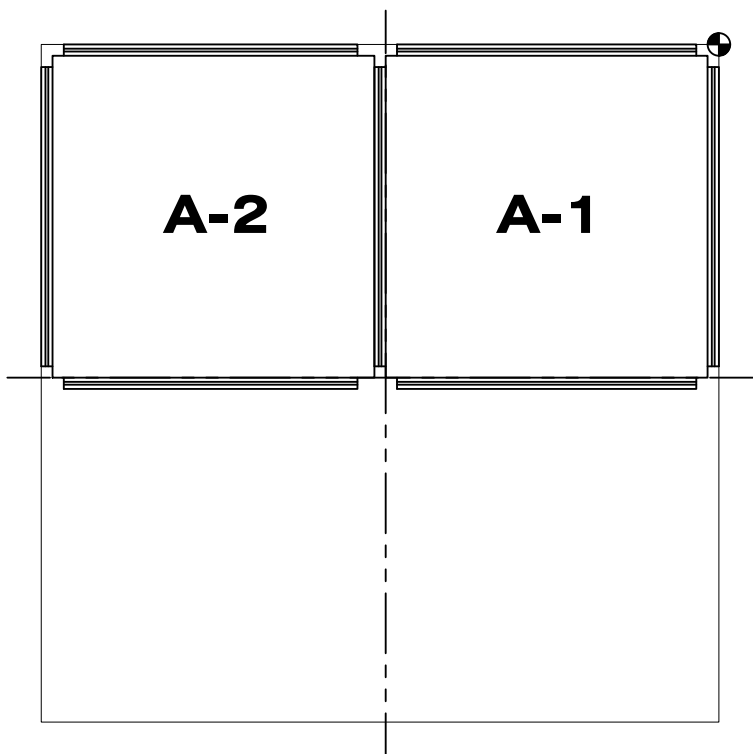
FIRST SET PANEL LEVEL, PLUMB, AND ALLOW FOR PROPER INSTALLATION OF ALL PROCEEDING PANELS.
1. SCREW ATTACHMENT COMPONENT
2. AFTER PANEL IS SET AND SECURED SCREW ATTACHMENT



NOTE:
START POINT VARIES WITH PROJECT.

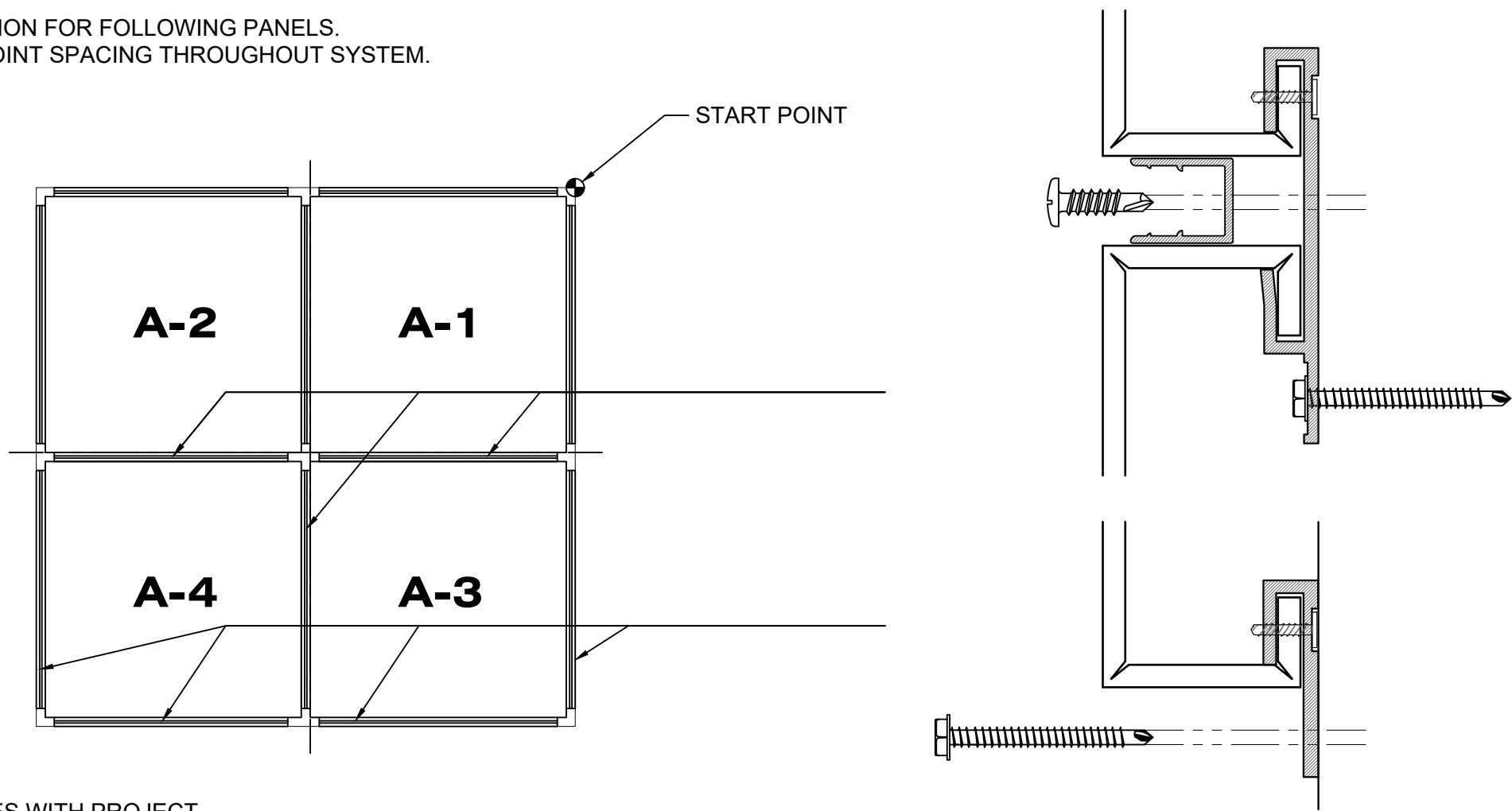
STEP 3: SECOND PANEL ALIGNMENT AND INSTALLATION

SET SECOND PANEL LEVEL, PLUMB, AND ALLOW FOR PROPER INSTALLATION OF ALL PROCEEDING PANELS.
SET JOINT BETWEEN PANELS TO AS PER SHOP DRAWINGS.
1. "HOOK" THE FOLLOWING PANEL INTO RECIEVER POCKET IN THE EXTRUSION OF THE ALREADY INSTALLED PANEL
2. INSERT U CHANNEL AND SCREW.
3. IF IT IS THE LAST PANEL FOLLOW PROCESS #1 IN STEP 2. OTHERWISE, FOLLOW PROCESS #2 IN STEP 2.



STEP 3: FOLLOWING PANEL INSTALLATION

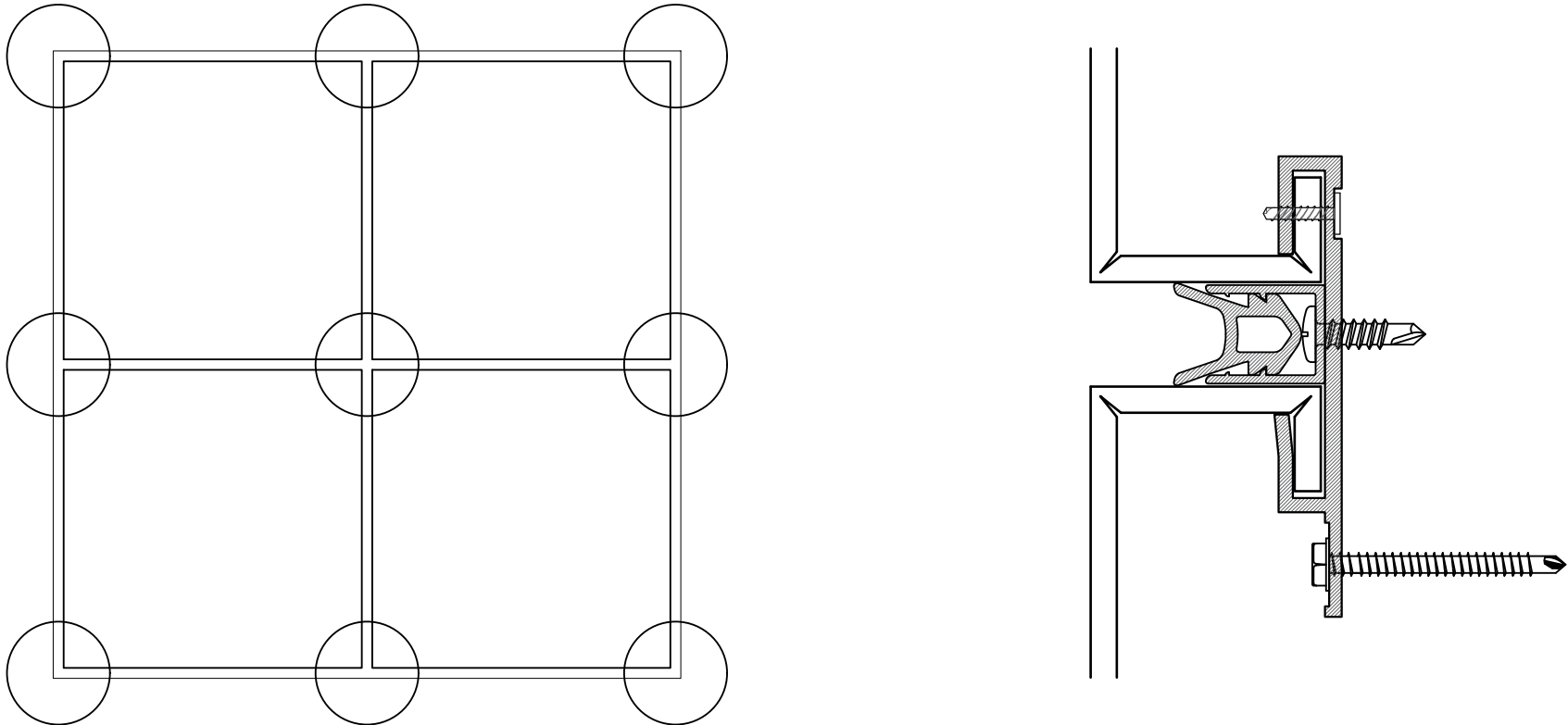
REPEAT INSTALLATION FOR FOLLOWING PANELS.
MAINTAIN EQUAL JOINT SPACING THROUGHOUT SYSTEM.



NOTE:
START POINT VARIES WITH PROJECT.

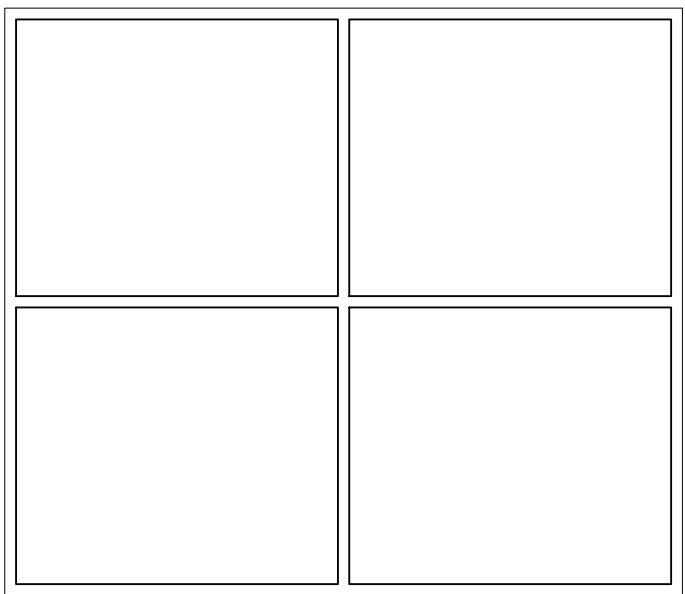
STEP 4: GASKET OR BACKER ROD AND SEALANT INSTALLATION

INSTALL GASKET OR BACKER ROD AND SEALANT IN ALL JOINTS AS PER MANUFACTURER'S REQUIREMENTS. WHEN INSTALLING GASKET PLACE A BEAD OF SEALANT OR ADHESIVE IN JOINTS. BEAD TO BE A MINIMUM OF 0'-6" LONG AND PLACED AT ALL JOINTS INTERSECTIONS (IN ALL DIRECTIONS). ALL ENDS OF THE GASKET AND ALL CORNERS (SEE CIRCLES ON DRAWING).



STEP 5: CLEANING.

CLEAN ALL PANELS PER PANEL MANUFACTURER'S REQUIREMENTS.



ALLIED SPECIALITY GROUP, INC.
3225 DELL AVENUE
NORTH BERGEN, NJ 07047
TEL: (201)223-4600
E: info@alliedmetal.com

PROJECT
INSTALLATION INSTRUCTIONS

ARCHITECT

DRAWN BY
GCD

JOB #

DATE
01-30-2023

REV #	DATE	INITIALS
△		
△		
△		
△		
△		

This document is the sole property of ALLIED METAL. All design, manufacturing, and construction information contained herein is the confidential and proprietary information of ALLIED METAL. No part of this document may be reproduced, stored in a retrieval system, or transmitted in any form or by any means, electronic, mechanical, photocopying, recording, or by any information storage and retrieval system, without the prior written permission of ALLIED METAL. The user of this document agrees to hold ALLIED METAL harmless for any and all damages, including reasonable attorneys' fees, that may be incurred by the user of this document as a result of the user's use of this document in any way other than as intended by ALLIED METAL.

Approved By _____
Date Approved _____

SHEET NUMBER

AM I.1